

4 fields, 633 acres in Tripp County, SD

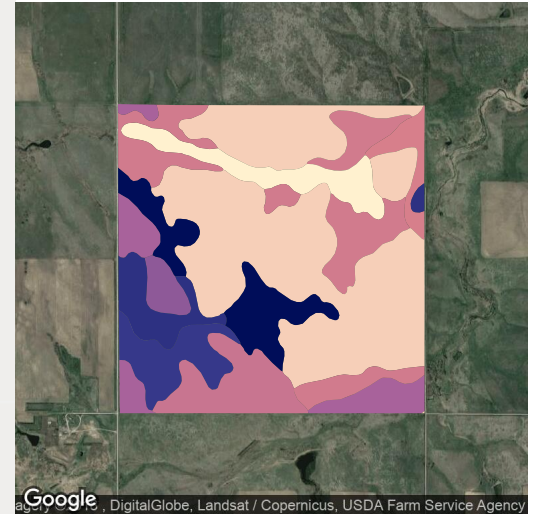
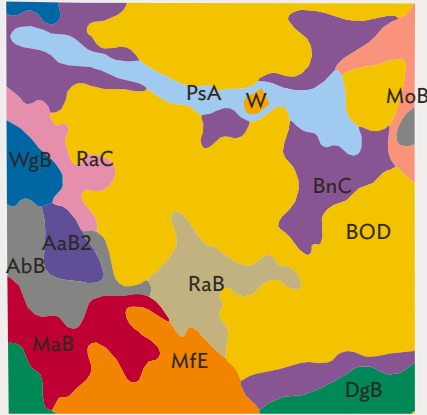
TOWNSHIP/SECTION 98N 77W – 29, 30, 31, 32

AVG NCCPI

21.9

COUNTY AVG

24.5



QUALITY 15 37

Google

Map data ©2018 Google

All fields

Source: NRCS Soil Survey

633 ac

SOIL CODE	SOIL DESCRIPTION	ACRES	PERCENTAGE OF FIELD	SOIL CLASS	NCCPI
■ BOD	Boyd-Okaton association, 9 to 25 percent slopes	280.67	44.4%	6	16.7
■ BnC	Boyd clay, 5 to 9 percent slopes	90.42	14.3%	4	22.2
■ MfE	Manter-Anselmo fine sandy loams, 15 to 30 percent slopes	42.30	6.7%	6	23.1
■ PsA	Wendte clay, channeled, 0 to 2 percent slopes	36.40	5.8%	6	11.1
■ MaB	Manter fine sandy loam, 3 to 9 percent slopes	35.87	5.7%	3	32.0
■ RaB	Ree loam, 3 to 6 percent slopes	31.18	4.9%	2	40.2
■ AbB	Anselmo fine sandy loam, 3 to 6 percent slopes	27.99	4.4%	3	32.8
■ DgB	Doger loamy fine sand, 0 to 6 percent slopes	25.54	4.0%	4	26.2
■ RaC	Ree loam, 6 to 9 percent slopes	18.28	2.9%	3	37.0

4 fields, 633 acres in Tripp County, SD		TOWNSHIP/SECTION 98N 77W – 29, 30, 31, 32			
■	WgB Wewela fine sandy loam, 3 to 6 percent slopes	15.82	2.5%	4	26.2
■	MoB Millboro silty clay, 3 to 6 percent slopes	14.35	2.3%	3	21.6
■	AaB2 Anselmo loamy fine sand, 0 to 9 percent slopes, eroded	12.36	2.0%	6	27.5
■	W Water	1.54	0.2%		N/A
		631.17	99.8%		21.9

4 fields, 633 acres in Tripp County, SD

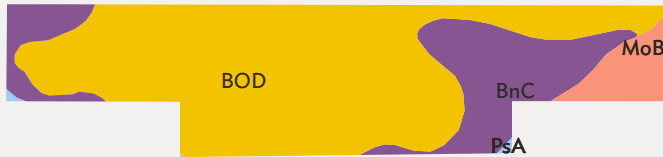
TOWNSHIP/SECTION 98N 77W – 29, 30, 31, 32

AVG NCCPI

COUNTY AVG

18.2

24.5



Google

Map data ©2018 Google

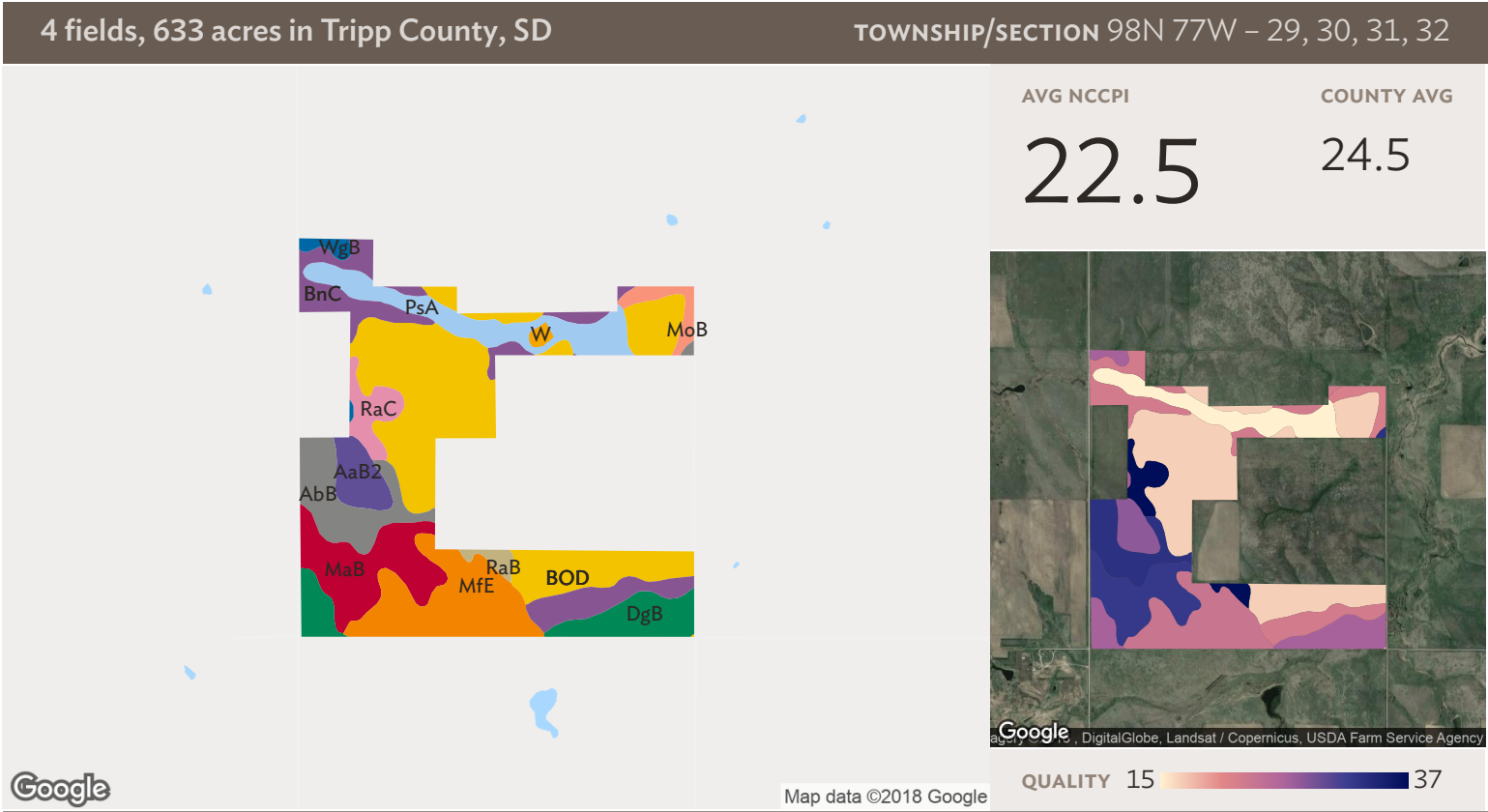
Google, DigitalGlobe, Landsat / Copernicus, USDA Farm Service Agency

Field 1

Source: NRCS Soil Survey

77 ac

SOIL CODE	SOIL DESCRIPTION	ACRES	PERCENTAGE OF FIELD	SOIL CLASS	NCCPI
■ BOD	Boyd-Okaton association, 9 to 25 percent slopes	55.45	71.7%	6	16.7
■ BnC	Boyd clay, 5 to 9 percent slopes	17.05	22.0%	4	22.2
■ MoB	Millboro silty clay, 3 to 6 percent slopes	4.78	6.2%	3	21.6
■ PsA	Wendte clay, channeled, 0 to 2 percent slopes	0.10	0.1%	6	11.1
77.38					18.2



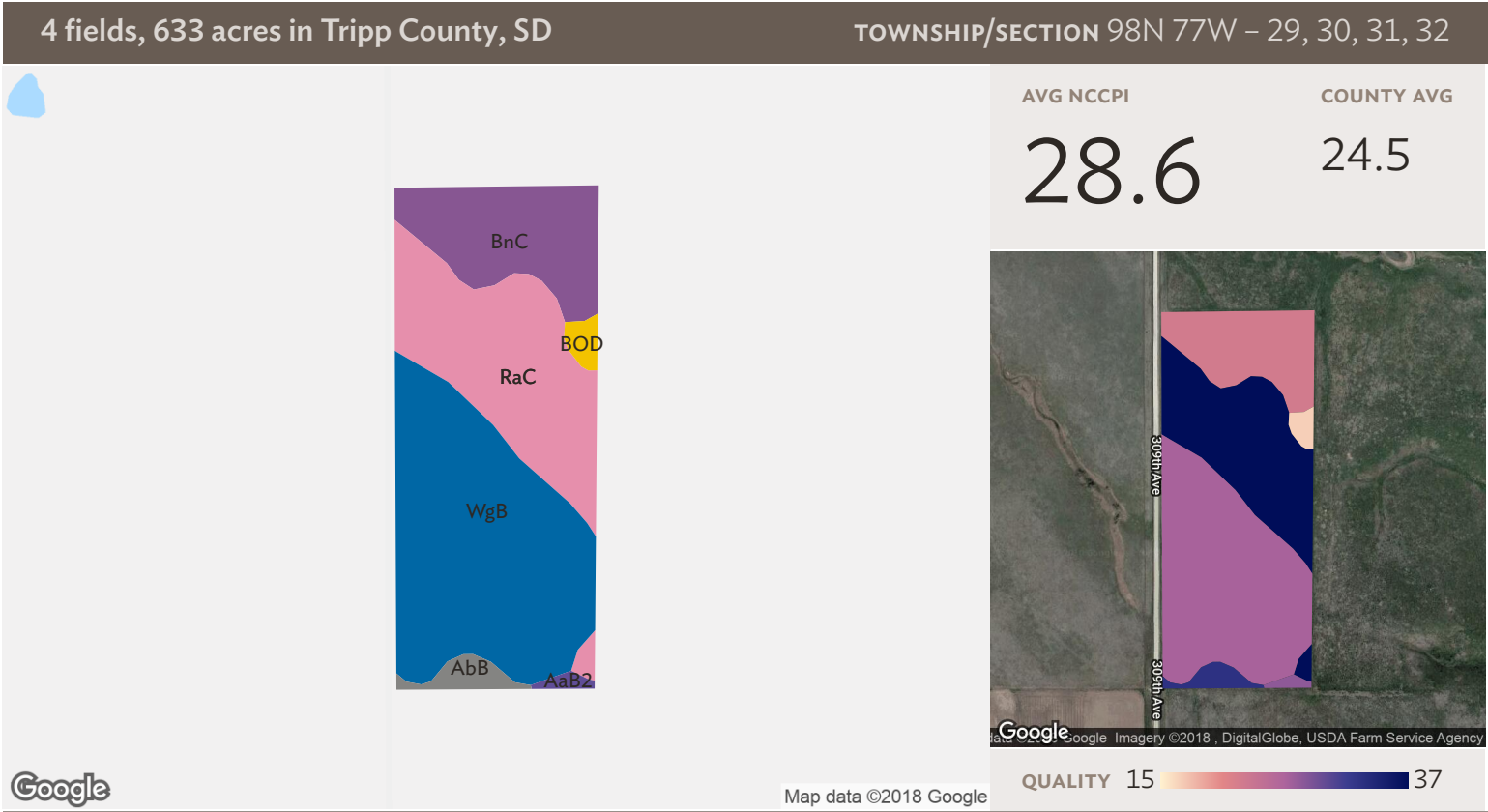
Field 2

346 ac

Source: NCCS Soil Survey

SOIL CODE	SOIL DESCRIPTION	ACRES	PERCENTAGE OF FIELD	SOIL CLASS	NCCPI
■ BOD	Boyd-Okaton association, 9 to 25 percent slopes	110.18	31.9%	6	16.7
■ MfE	Manter-Anselmo fine sandy loams, 15 to 30 percent slopes	41.72	12.1%	6	23.1
■ BnC	Boyd clay, 5 to 9 percent slopes	38.24	11.1%	4	22.2
■ MaB	Manter fine sandy loam, 3 to 9 percent slopes	34.97	10.1%	3	32.0
■ PsA	Wendte clay, channeled, 0 to 2 percent slopes	31.23	9.0%	6	11.1
■ AbB	Anselmo fine sandy loam, 3 to 6 percent slopes	26.23	7.6%	3	32.8
■ DgB	Doger loamy fine sand, 0 to 6 percent slopes	25.54	7.4%	4	26.2
■ AaB2	Anselmo loamy fine sand, 0 to 9 percent slopes, eroded	12.27	3.5%	6	27.5
■ RaC	Ree loam, 6 to 9 percent slopes	10.73	3.1%	3	37.0

4 fields, 633 acres in Tripp County, SD			TOWNSHIP/SECTION 98N 77W – 29, 30, 31, 32			
■	MoB	Millboro silty clay, 3 to 6 percent slopes	6.41	1.9%	3	21.6
■	WgB	Wewela fine sandy loam, 3 to 6 percent slopes	3.48	1.0%	4	26.2
■	RaB	Ree loam, 3 to 6 percent slopes	3.30	1.0%	2	40.2
■	W	Water	1.54	0.4%		N/A
			344.29	99.6%		22.5



Field 3

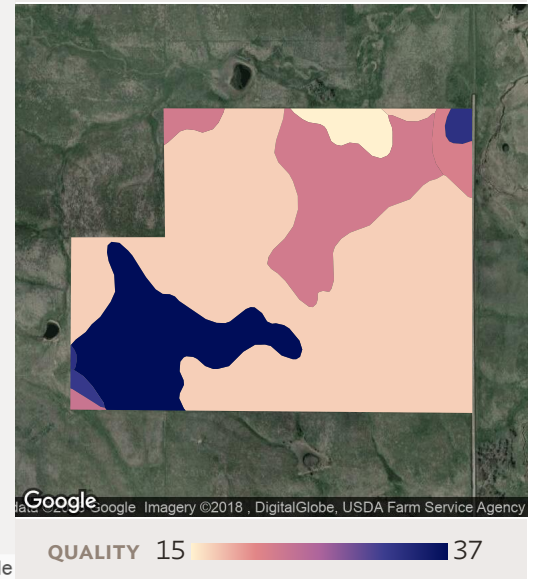
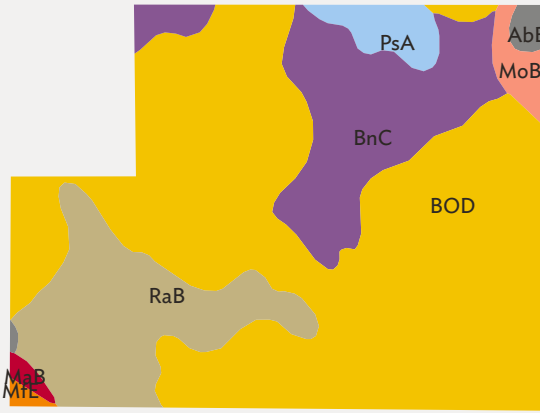
Source: NRCS Soil Survey

26 ac

SOIL CODE	SOIL DESCRIPTION	ACRES	PERCENTAGE OF FIELD	SOIL CLASS	NCCPI
■ WgB	Wewela fine sandy loam, 3 to 6 percent slopes	12.33	48.2%	4	26.2
■ RaC	Ree loam, 6 to 9 percent slopes	7.56	29.5%	3	37.0
■ BnC	Boyd clay, 5 to 9 percent slopes	4.91	19.2%	4	22.2
■ AbB	Anselmo fine sandy loam, 3 to 6 percent slopes	0.36	1.4%	3	32.8
■ BOD	Boyd-Okaton association, 9 to 25 percent slopes	0.33	1.3%	6	16.7
■ AaB2	Anselmo loamy fine sand, 0 to 9 percent slopes, eroded	0.09	0.3%	6	27.5
25.58					28.6

4 fields, 633 acres in Tripp County, SD TOWNSHIP/SECTION 98N 77W – 29, 30, 31, 32

AVG NCCPI **21.3** COUNTY AVG 24.5



Google

Map data ©2018 Google

Field 4

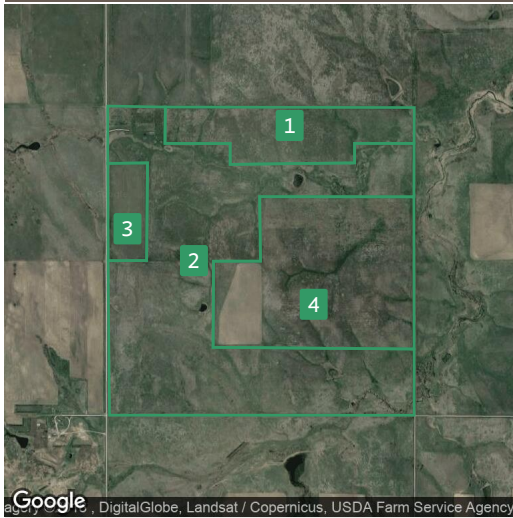
184 ac

Source: NRCS Soil Survey

SOIL CODE	SOIL DESCRIPTION	ACRES	PERCENTAGE OF FIELD	SOIL CLASS	NCCPI
■ BOD	Boyd-Okaton association, 9 to 25 percent slopes	114.71	62.4%	6	16.7
■ BnC	Boyd clay, 5 to 9 percent slopes	30.21	16.4%	4	22.2
■ RaB	Ree loam, 3 to 6 percent slopes	27.89	15.2%	2	40.2
■ PsA	Wendte clay, channeled, 0 to 2 percent slopes	5.07	2.8%	6	11.1
■ MoB	Millboro silty clay, 3 to 6 percent slopes	3.17	1.7%	3	21.6
■ AbB	Anselmo fine sandy loam, 3 to 6 percent slopes	1.40	0.8%	3	32.8
■ MaB	Manter fine sandy loam, 3 to 9 percent slopes	0.90	0.5%	3	32.0
■ MfE	Manter-Anselmo fine sandy loams, 15 to 30 percent slopes	0.57	0.3%	6	23.1
183.92					21.3

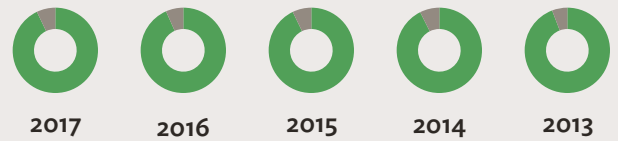
4 fields, 633 acres in Tripp County, SD

TOWNSHIP/SECTION 98N 77W – 29, 30, 31, 32



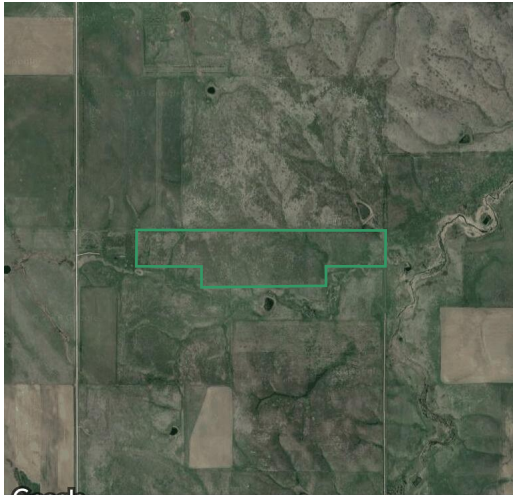
All fields

633 ac



■ Grass/Pasture	92.9%	93.4%	92.8%	92.6%	94.2%
■ Other	7.1%	6.6%	7.2%	7.4%	5.8%

Google, DigitalGlobe, Landsat / Copernicus, USDA Farm Service Agency



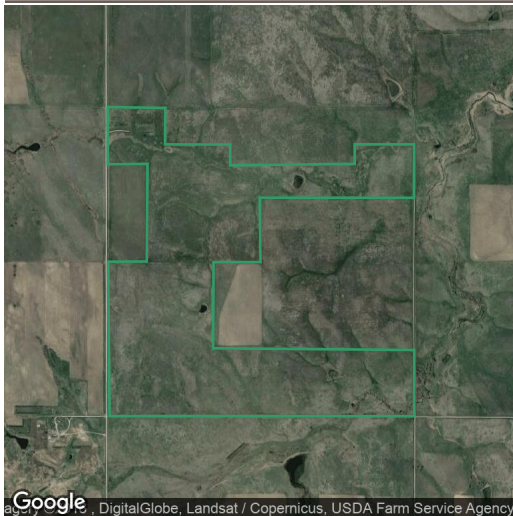
Field 1

77 ac



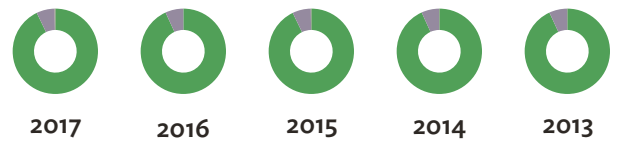
■ Grass/Pasture	100.0%	100.0%	100.0%	100.0%	100.0%
-----------------	--------	--------	--------	--------	--------

Google, DigitalGlobe, Landsat / Copernicus, USDA Farm Service Agency



Field 2

346 ac



■ Grass/Pasture	92.8%	93.2%	92.8%	93.2%	93.1%
■ Non-Cropland	6.8%	6.8%	7.0%	6.7%	6.8%
■ Other	0.3%	-	0.2%	0.1%	0.1%

Google, DigitalGlobe, Landsat / Copernicus, USDA Farm Service Agency

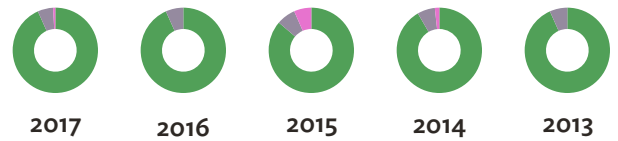
4 fields, 633 acres in Tripp County, SD

TOWNSHIP/SECTION 98N 77W – 29, 30, 31, 32



Field 3

26 ac

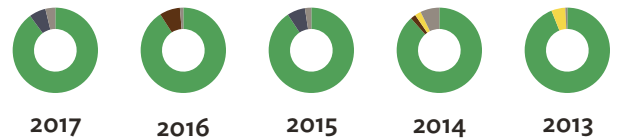


	2017	2016	2015	2014	2013
Grass/Pasture	93.3%	93.3%	86.2%	91.6%	93.3%
Non-Cropland	5.9%	6.7%	7.2%	6.7%	6.7%
Alfalfa	0.8%	-	6.6%	1.7%	-



Field 4

184 ac







	2017	2016	2015	2014	2013
Grass/Pasture	89.9%	90.9%	90.7%	88.5%	93.9%
Crop Undetermined	6.3%	-	6.8%	-	-
Sorghum	-	7.8%	-	2.0%	-
Corn	-	-	-	2.3%	5.3%
Other	3.8%	1.3%	2.4%	7.2%	0.7%

Source: NASS Cropland Data Layer

4 fields, 633 acres in Tripp County, SD

TOWNSHIP/SECTION 98N 77W - 29, 30, 31, 32

Tripp County, SD

FIELD	ACRES	LOCATION	OWNER (LAST UPDATED)
1 	77.38	98N 77W - 29	N/A
2 	345.83	98N 77W - 29, 30, 31, 32	N/A
3 	25.58	98N 77W - 29, 30	N/A
4 	183.92	98N 77W - 29	N/A

632.71

