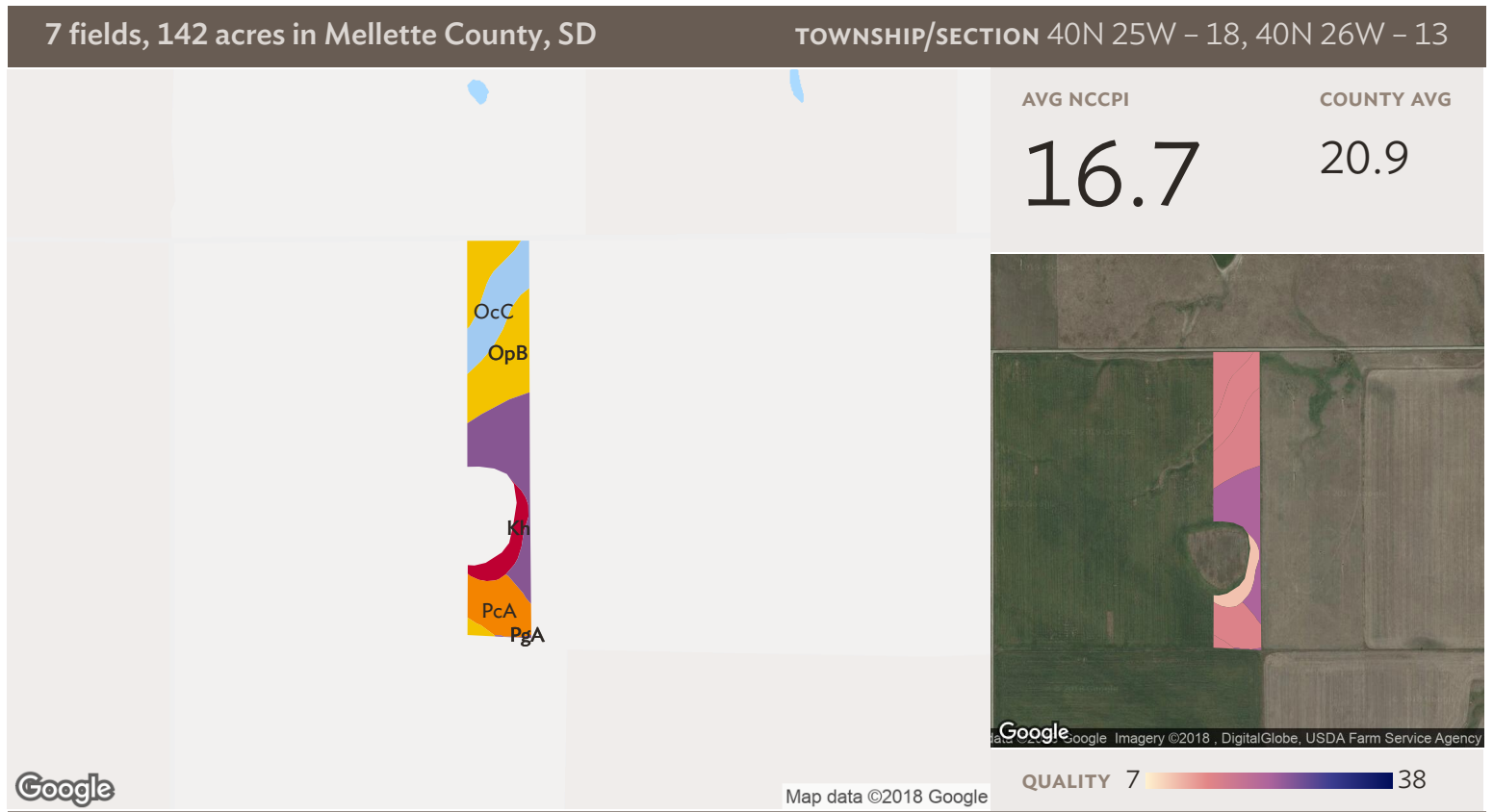


Source: NRCS Soil Survey

## All fields

142 ac

SOIL CODE	SOIL DESCRIPTION	ACRES	PERCENTAGE OF FIELD	SOIL CLASS	NCCPI
OpB	Opal-Promise clays, 3 to 6 percent slopes	57.29	40.2%	3	15.8
PgA	Promise and Opal clays, 0 to 2 percent slopes	46.99	33.0%	3	22.4
PcA	Promise clay, 0 to 3 percent slopes	19.66	13.8%	3	15.6
OcC	Opal clay, 6 to 9 percent slopes	10.01	7.0%	4	15.6
Kh	Kolls and Hoven soils	8.51	6.0%	6	10.4
<b>142.45</b>					<b>17.6</b>



## Field 1

21 ac

SOIL CODE	SOIL DESCRIPTION	ACRES	PERCENTAGE OF FIELD	SOIL CLASS	NCCPI
OpB	Opal-Promise clays, 3 to 6 percent slopes	7.06	33.6%	3	15.8
PgA	Promise and Opal clays, 0 to 2 percent slopes	4.93	23.5%	3	22.4
OcC	Opal clay, 6 to 9 percent slopes	3.71	17.7%	4	15.6
PcA	Promise clay, 0 to 3 percent slopes	3.22	15.3%	3	15.6
Kh	Kolls and Hoven soils	2.08	9.9%	6	10.4
<b>21.01</b>					<b>16.7</b>

7 fields, 142 acres in Mellette County, SD

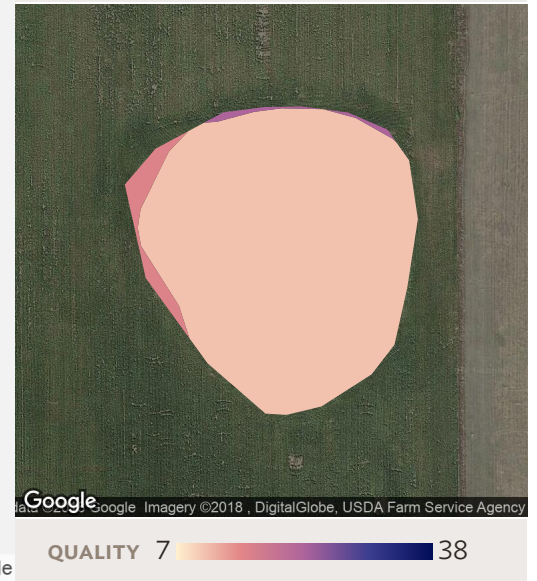
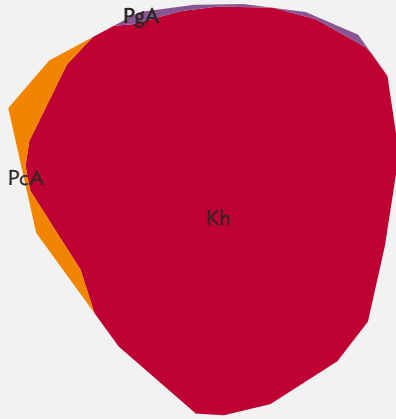
TOWNSHIP/SECTION 40N 25W - 18, 40N 26W - 13

AVG NCCPI

**11.2**

COUNTY AVG

20.9



Google

Map data ©2018 Google

Google Imagery ©2018, DigitalGlobe, USDA Farm Service Agency

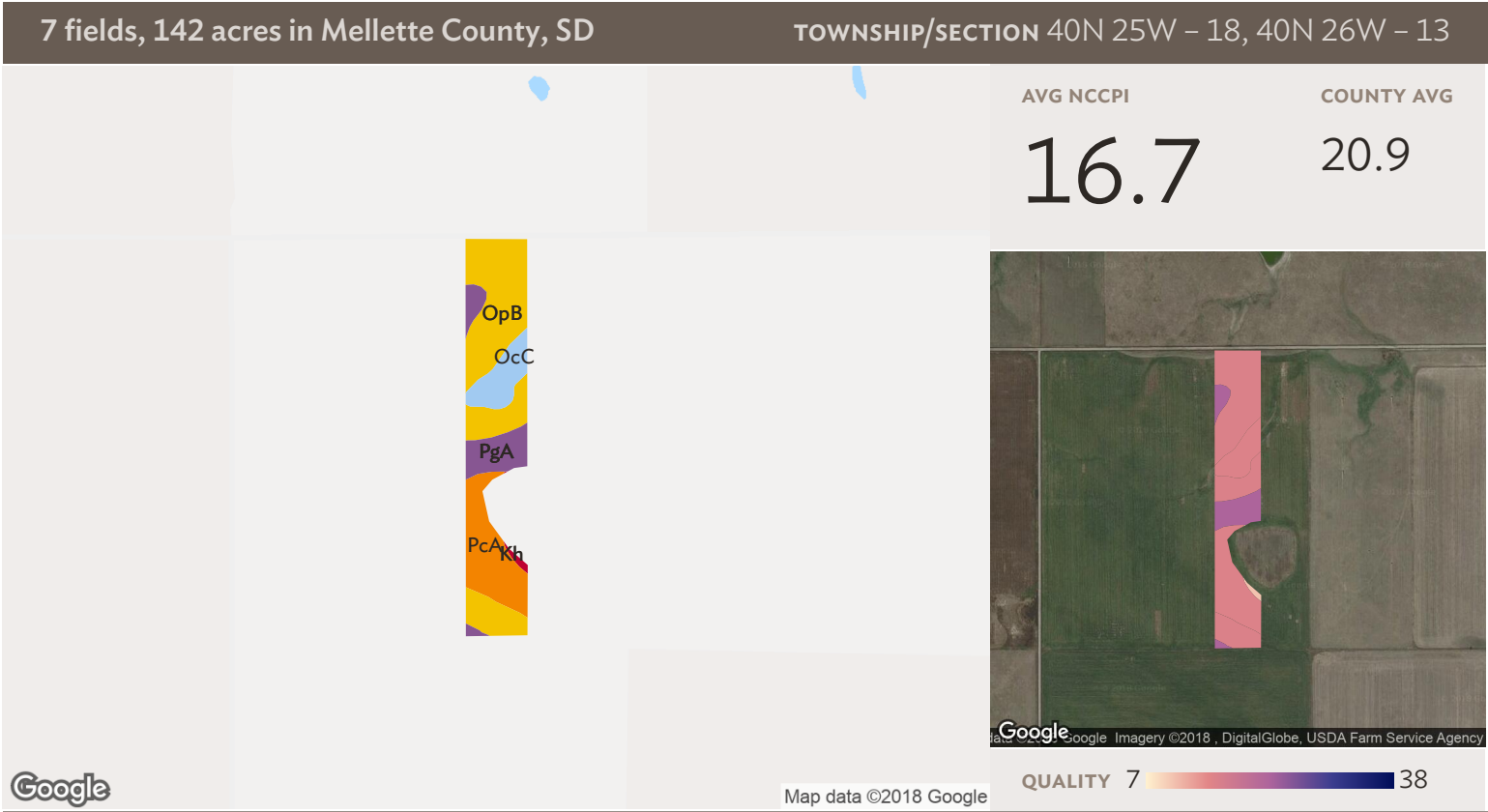
QUALITY 7 38

Source: NRCS Soil Survey

## Field 2

7 ac

SOIL CODE	SOIL DESCRIPTION	ACRES	PERCENTAGE OF FIELD	SOIL CLASS	NCCPI	
■ Kh	Kolls and Hoven soils	6.31	89.3%	6	10.4	
■ PcA	Promise clay, 0 to 3 percent slopes	0.55	7.8%	3	15.6	
■ PgA	Promise and Opal clays, 0 to 2 percent slopes	0.21	2.9%	3	22.4	
					<b>7.07</b>	<b>11.2</b>

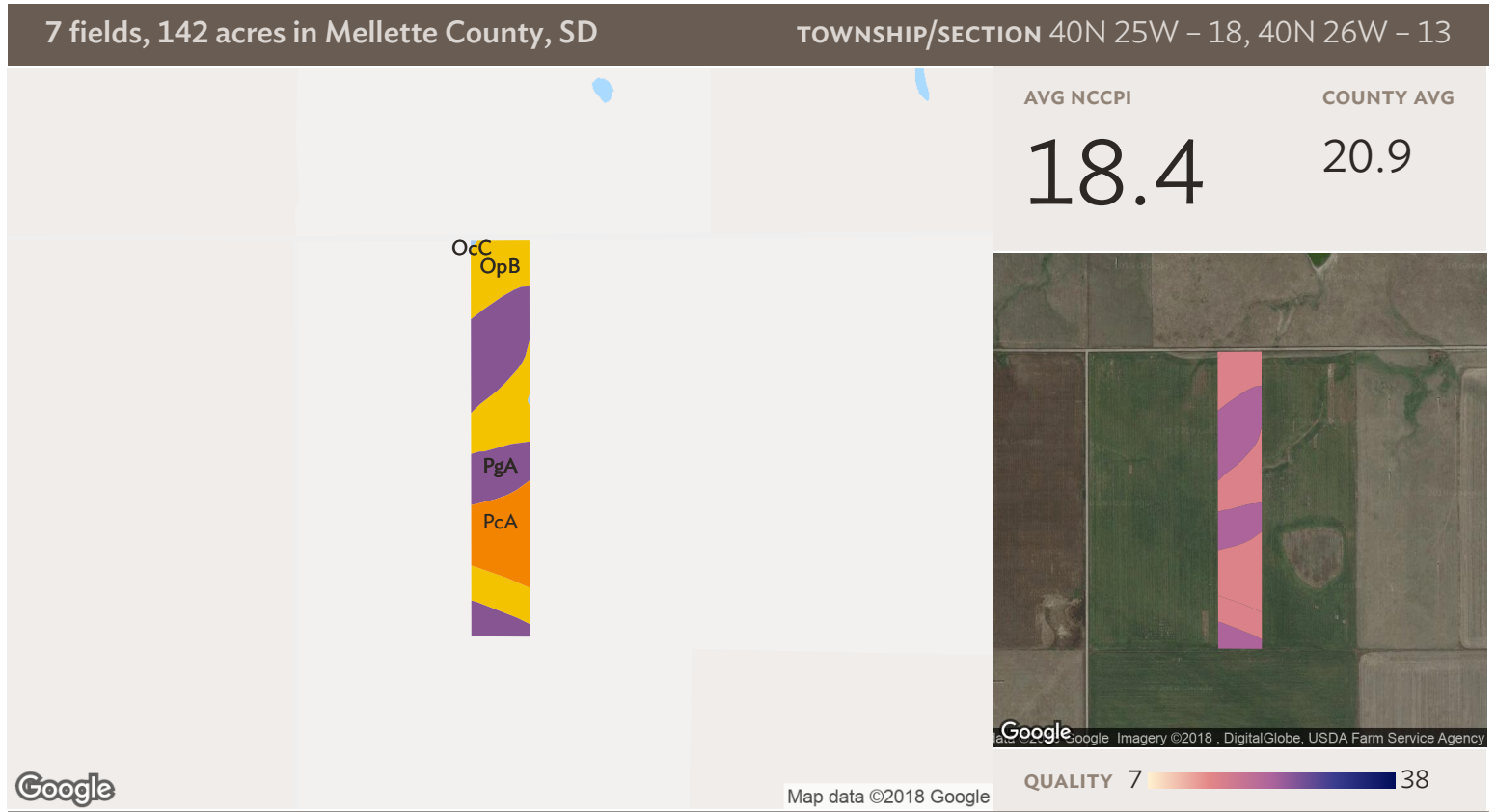


## Field 3

Source: NRCS Soil Survey

22 ac

SOIL CODE	SOIL DESCRIPTION	ACRES	PERCENTAGE OF FIELD	SOIL CLASS	NCCPI
OpB	Opal-Promise clays, 3 to 6 percent slopes	11.23	52.0%	3	15.8
PcA	Promise clay, 0 to 3 percent slopes	4.61	21.3%	3	15.6
PgA	Promise and Opal clays, 0 to 2 percent slopes	3.20	14.8%	3	22.4
OcC	Opal clay, 6 to 9 percent slopes	2.46	11.4%	4	15.6
Kh	Kolls and Hoven soils	0.11	0.5%	6	10.4
<b>21.62</b>					<b>16.7</b>

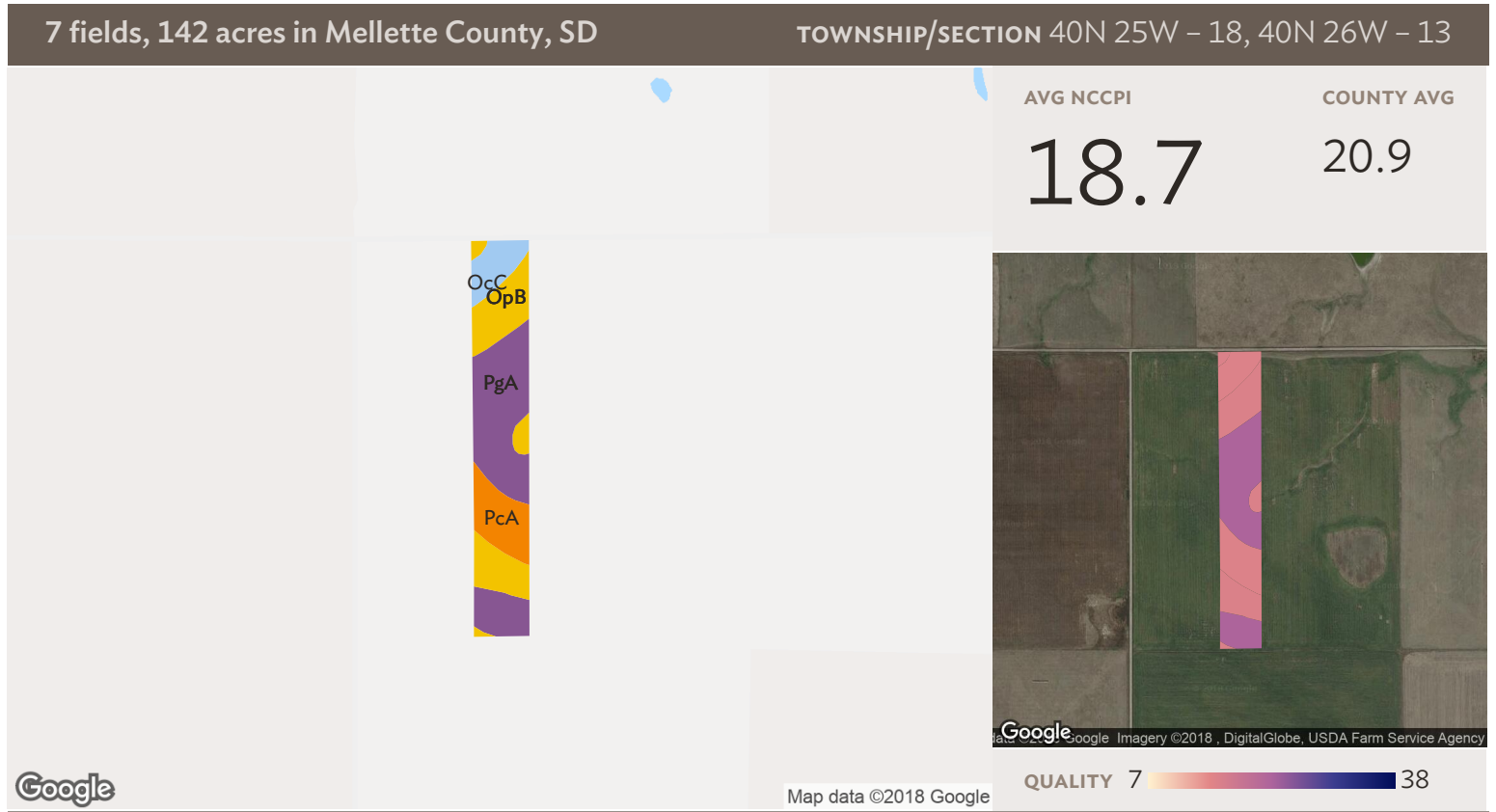


## Field 4

Source: NRCS Soil Survey

23 ac

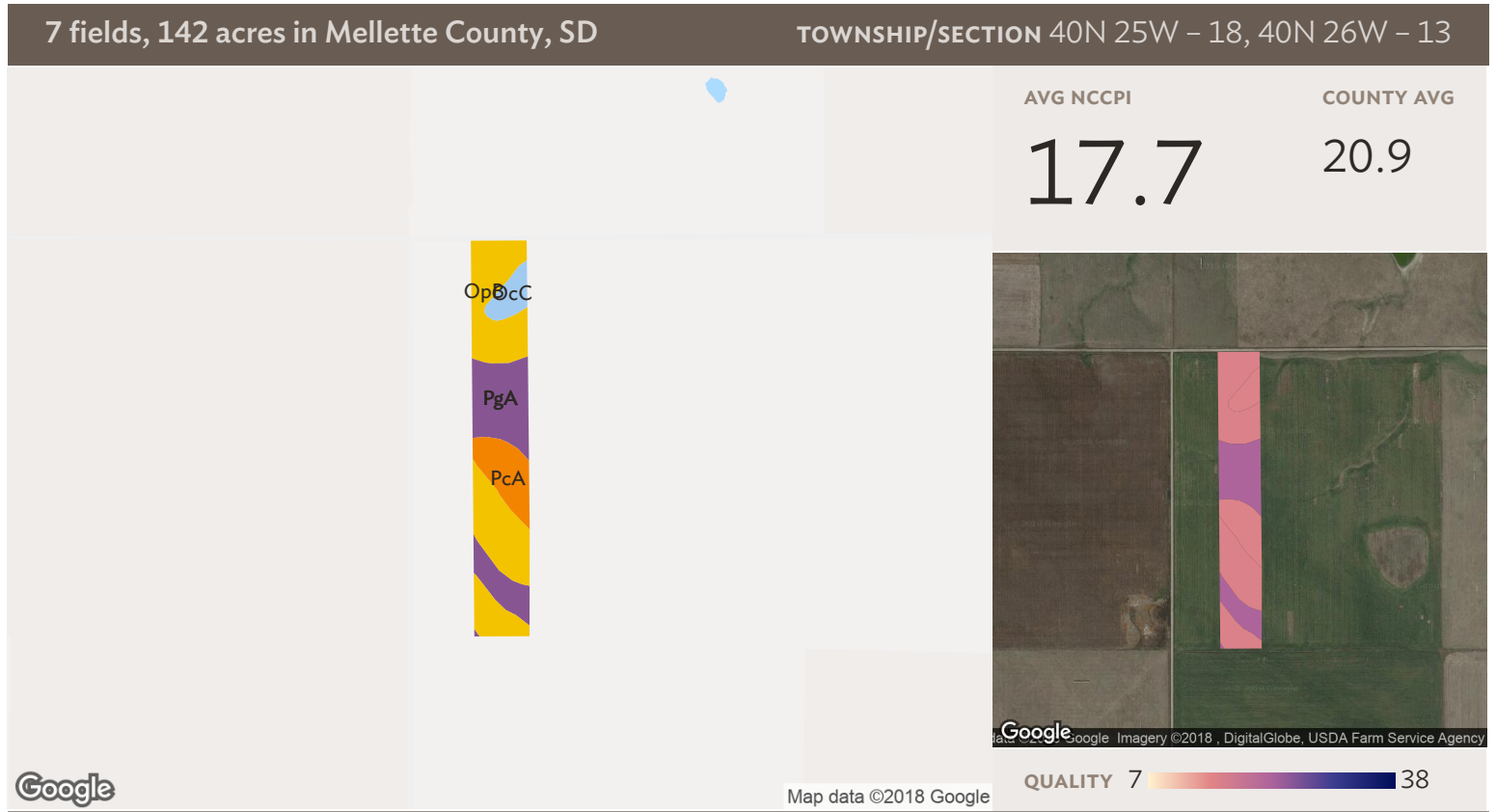
SOIL CODE	SOIL DESCRIPTION	ACRES	PERCENTAGE OF FIELD	SOIL CLASS	NCCPI
PgA	Promise and Opal clays, 0 to 2 percent slopes	9.37	40.0%	3	22.4
OpB	Opal-Promise clays, 3 to 6 percent slopes	9.17	39.2%	3	15.8
PcA	Promise clay, 0 to 3 percent slopes	4.84	20.7%	3	15.6
OcC	Opal clay, 6 to 9 percent slopes	0.03	0.1%	4	15.6
<b>23.41</b>					<b>18.4</b>



## Field 5

22 ac

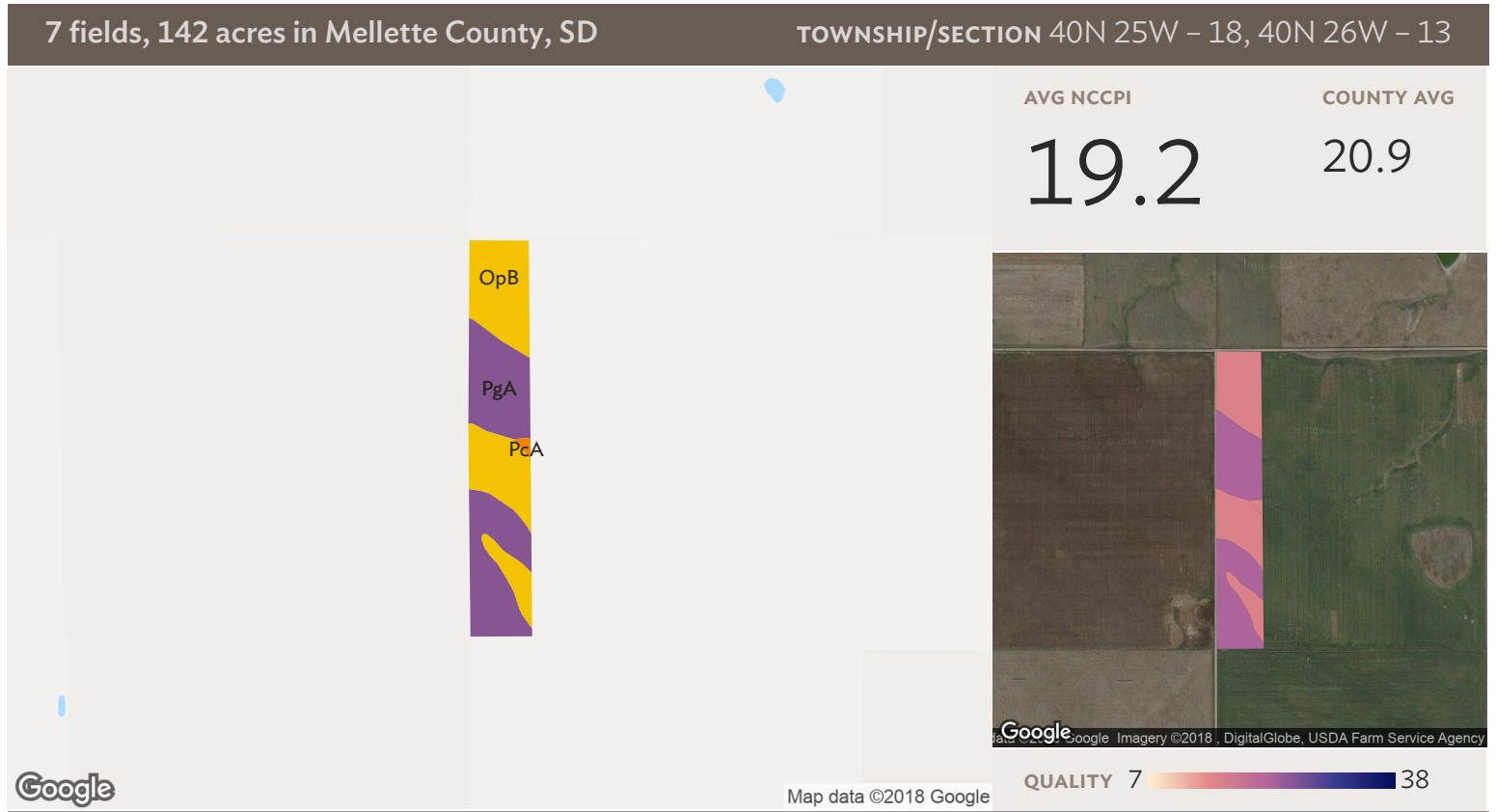
SOIL CODE	SOIL DESCRIPTION	ACRES	PERCENTAGE OF FIELD	SOIL CLASS	NCCPI
PgA	Promise and Opal clays, 0 to 2 percent slopes	10.08	44.9%	3	22.4
OpB	Opal-Promise clays, 3 to 6 percent slopes	6.57	29.3%	3	15.8
PcA	Promise clay, 0 to 3 percent slopes	3.38	15.0%	3	15.6
OcC	Opal clay, 6 to 9 percent slopes	2.41	10.8%	4	15.6
<b>22.44</b>					<b>18.7</b>



## Field 6

22 ac

SOIL CODE	SOIL DESCRIPTION	ACRES	PERCENTAGE OF FIELD	SOIL CLASS	NCCPI
OpB	Opal-Promise clays, 3 to 6 percent slopes	11.57	51.7%	3	15.8
PgA	Promise and Opal clays, 0 to 2 percent slopes	6.50	29.0%	3	22.4
PcA	Promise clay, 0 to 3 percent slopes	2.92	13.1%	3	15.6
OcC	Opal clay, 6 to 9 percent slopes	1.38	6.2%	4	15.6
<b>22.37</b>					<b>17.7</b>



# Field 7

25 ac

SOIL CODE	SOIL DESCRIPTION	ACRES	PERCENTAGE OF FIELD	SOIL CLASS	NCCPI
PgA	Promise and Opal clays, 0 to 2 percent slopes	12.70	51.8%	3	22.4
OpB	Opal-Promise clays, 3 to 6 percent slopes	11.69	47.6%	3	15.8
PcA	Promise clay, 0 to 3 percent slopes	0.14	0.6%	3	15.6
<b>24.53</b>					<b>19.2</b>

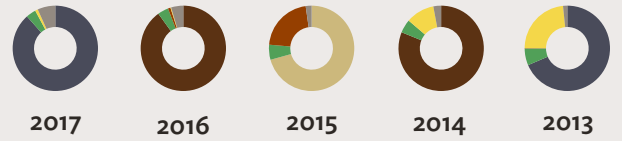


7 fields, 142 acres in Mellette County, SD TOWNSHIP/SECTION 40N 25W - 18, 40N 26W - 13

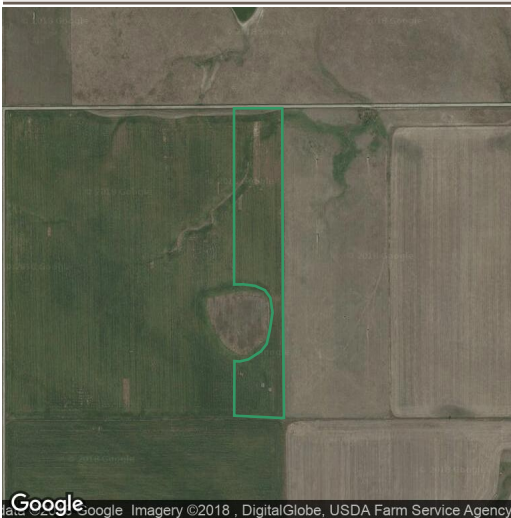


**All fields**

142 ac

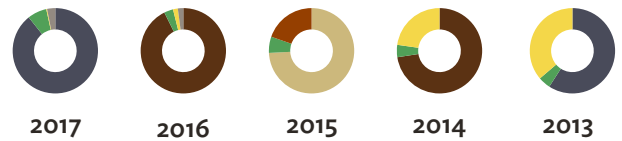


	2017	2016	2015	2014	2013
■ Crop Undetermined	88.4%	-	-	-	68.6%
■ Sorghum	-	90.0%	-	81.1%	-
■ Spring Wheat	-	-	70.7%	-	-
■ Grass/Pasture	3.8%	4.1%	5.7%	5.1%	6.4%
■ Winter Wheat	-	1.0%	21.4%	-	0.1%
■ Corn	1.0%	0.3%	-	10.8%	23.3%
■ Other	6.8%	4.6%	2.2%	2.9%	1.6%



**Field 1**

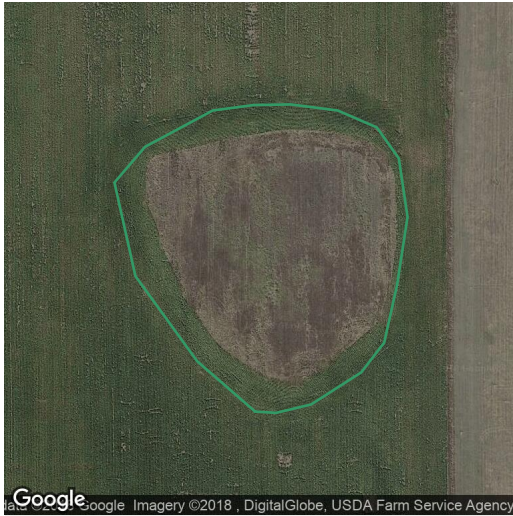
21 ac



	2017	2016	2015	2014	2013
■ Crop Undetermined	89.3%	-	-	-	59.1%
■ Sorghum	-	92.7%	-	72.6%	-
■ Spring Wheat	-	-	74.2%	-	-
■ Grass/Pasture	7.3%	3.4%	6.1%	4.7%	4.7%
■ Corn	0.3%	1.8%	-	22.8%	36.2%
■ Winter Wheat	-	-	19.7%	-	-
■ Other	3.1%	2.1%	-	-	-

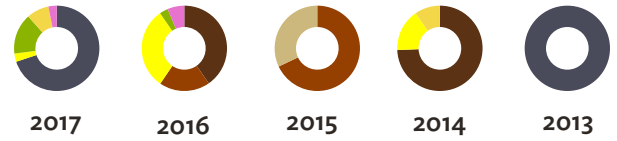
7 fields, 142 acres in Mellette County, SD

TOWNSHIP/SECTION 40N 25W - 18, 40N 26W - 13

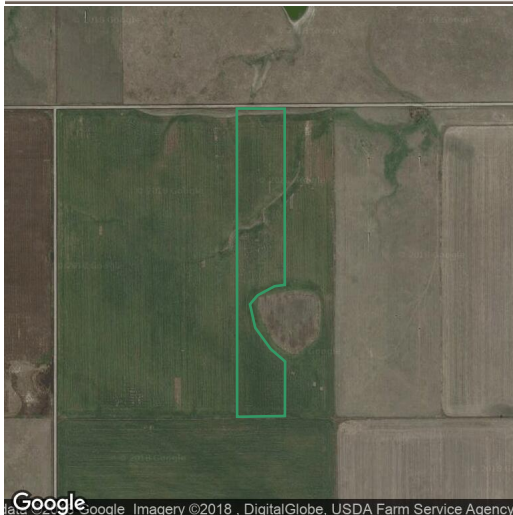


### Field 2

7 ac

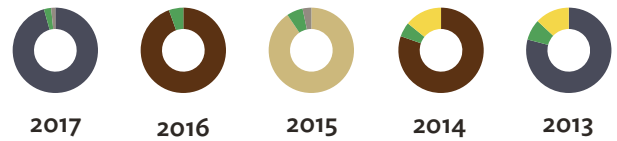


	2017	2016	2015	2014	2013
■ Crop Undetermined	69.9%	-	-	-	100.0%
■ Sorghum	-	40.3%	-	74.3%	-
■ Winter Wheat	-	19.2%	68.0%	-	-
■ Sunflower	3.1%	30.9%	-	16.0%	-
■ Soybeans	15.3%	3.2%	-	-	-
■ Corn	8.5%	-	-	9.6%	-
■ Spring Wheat	-	-	32.0%	-	-
■ Alfalfa	3.1%	6.4%	-	-	-



### Field 3

22 ac



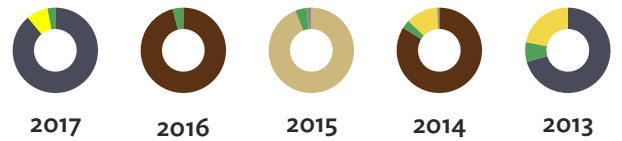
	2017	2016	2015	2014	2013
■ Crop Undetermined	95.7%	-	-	-	79.1%
■ Sorghum	-	94.5%	-	80.4%	-
■ Spring Wheat	-	-	90.6%	-	-
■ Grass/Pasture	2.7%	5.5%	6.1%	5.5%	7.9%
■ Corn	-	-	-	14.1%	13.0%
■ Other	1.6%	-	3.3%	-	-

7 fields, 142 acres in Mellette County, SD TOWNSHIP/SECTION 40N 25W - 18, 40N 26W - 13



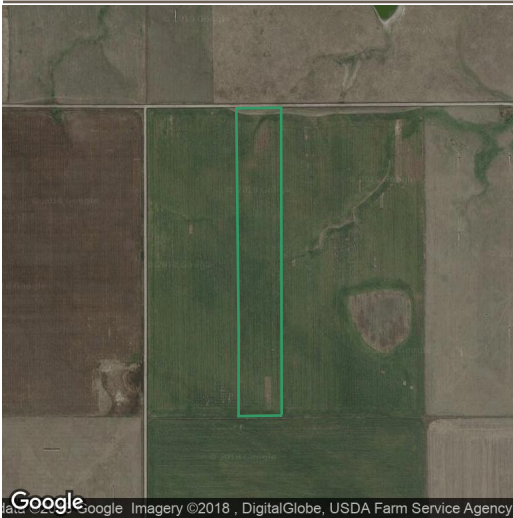
**Field 4**

23 ac



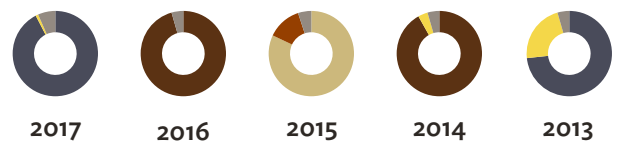
	2017	2016	2015	2014	2013
■ Crop Undetermined	88.9%	-	-	-	70.6%
■ Sorghum	-	96.0%	-	83.9%	-
■ Spring Wheat	-	-	93.9%	-	-
■ Sunflower	8.2%	-	-	-	-
■ Grass/Pasture	3.0%	4.0%	4.3%	3.2%	7.5%
■ Corn	-	-	-	12.1%	21.9%
■ Other	-	-	1.8%	0.8%	-

Google Imagery ©2018, DigitalGlobe, USDA Farm Service Agency



**Field 5**

22 ac



	2017	2016	2015	2014	2013
■ Crop Undetermined	92.4%	-	-	-	73.3%
■ Sorghum	-	95.5%	-	91.9%	-
■ Spring Wheat	-	-	82.0%	-	-
■ Winter Wheat	-	-	13.0%	-	-
■ Corn	1.0%	-	-	3.7%	22.2%
■ Other	6.6%	4.5%	5.0%	4.5%	4.5%

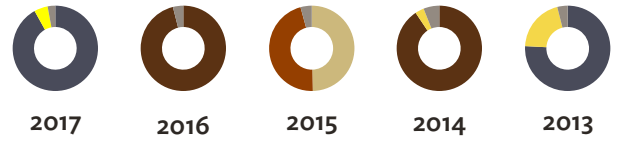
Google Imagery ©2018, DigitalGlobe, USDA Farm Service Agency

7 fields, 142 acres in Mellette County, SD TOWNSHIP/SECTION 40N 25W - 18, 40N 26W - 13

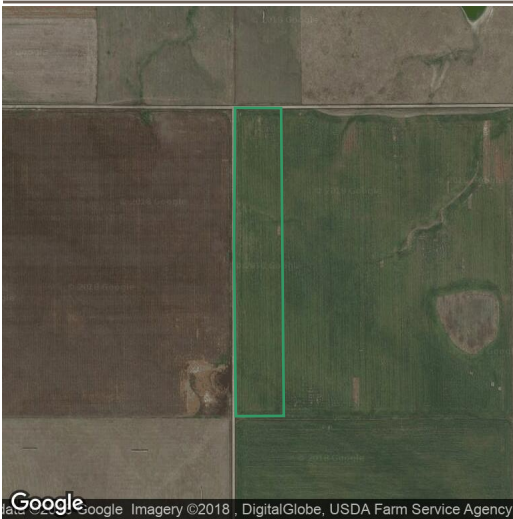


**Field 6**

22 ac

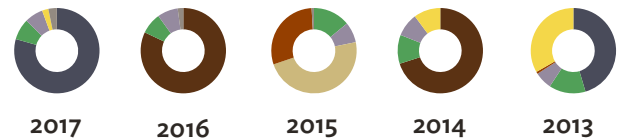


	2017	2016	2015	2014	2013
■ Crop Undetermined	91.9%	-	-	-	75.8%
■ Sorghum	-	96.1%	-	90.6%	-
■ Spring Wheat	-	-	49.6%	-	-
■ Winter Wheat	-	-	46.1%	-	-
■ Sunflower	5.2%	-	-	-	-
■ Corn	-	-	-	3.4%	20.2%
■ Other	2.9%	3.9%	4.3%	6.0%	3.9%



**Field 7**

25 ac










	2017	2016	2015	2014	2013
■ Crop Undetermined	79.4%	-	-	-	45.4%
■ Sorghum	-	82.1%	-	70.0%	-
■ Grass/Pasture	8.0%	8.0%	14.0%	10.9%	13.9%
■ Non-Cropland	7.0%	7.8%	7.8%	8.9%	6.6%
■ Spring Wheat	-	-	48.0%	-	-
■ Winter Wheat	-	-	29.3%	-	0.8%
■ Corn	2.4%	-	-	10.1%	33.3%
■ Other	3.2%	2.1%	0.9%	-	-

Source: NASS Cropland Data Layer

7 fields, 142 acres in Mellette County, SD

TOWNSHIP/SECTION 40N 25W – 18, 40N 26W – 13

## Mellette County, SD

FIELD	ACRES	LOCATION	OWNER (LAST UPDATED)
1 	21.01	40N 25W – 18	N/A
2 	7.07	40N 25W – 18	N/A
3 	21.62	40N 25W – 18	N/A
4 	23.41	40N 25W – 18	N/A
5 	22.44	40N 25W – 18	N/A
6 	22.37	40N 25W – 18	N/A
7 	24.53	40N 25W – 18, 40N 26W – 13	N/A
	<b>142.45</b>		

7 fields, 142 acres in Mellette County, SD

TOWNSHIP/SECTION 40N 25W - 18, 40N 26W - 13

